

FUEL FORCE®

The Premier Standard in Fuel Management

FuelServe.net

Cloud-Based Fuel Management Software



FuelForce® Advantages:



Durable and
Reliable Hardware



Secure Authorization
and Reporting



Wireless Data &
Reporting Access

FuelServe.net: Cloud-Based Fuel Management

FuelServe.net - Cloud-Based Fuel Management



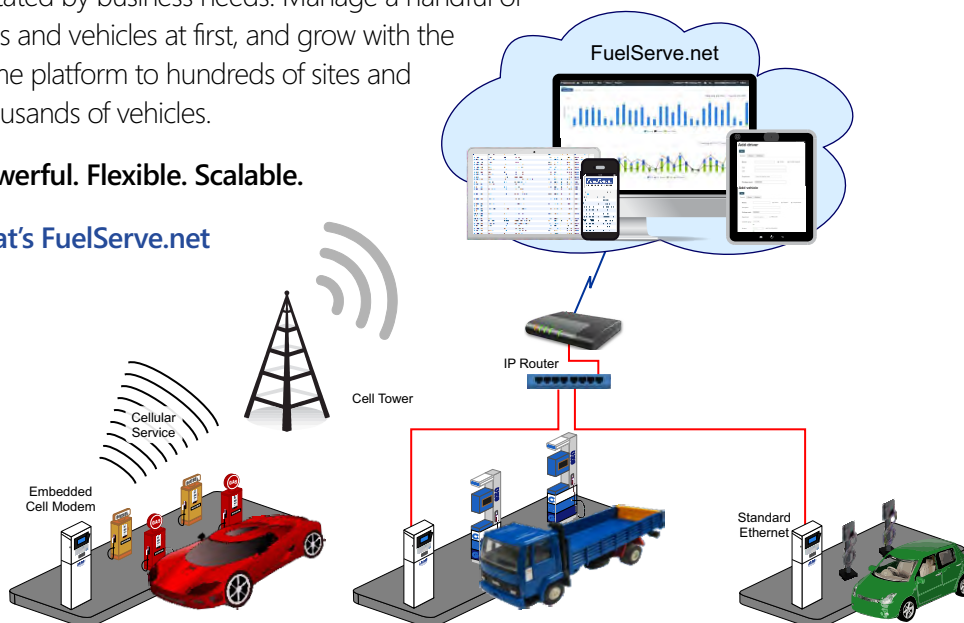
In 2008, Multiforce Systems introduced Fuelserve.net, the first cloud-based fuel management system. Provided on a Software as a Service (SaaS) model, FuelServe.net delivers the ability to face the challenges of fuel management securely from any device, anytime and anywhere you need.

With FuelForce® fuel management, you can know with absolute certainty that every gallon of fuel is dispensed to the proper vehicle by authorized personnel. Identify, authorize, measure and report all of your fuel usage. With that data, shrinkage can all but disappear. Additionally, with accurate data, cost-saving initiatives can be implemented and measured, ensuring lower operating costs are reached. Automatically logging detailed transactions provides an accurate view into your fuel use and the ability to control fuel consumption and the associated costs.

FuelServe.net allows you to look at your data from a number of perspectives, with easily customizable reports, giving you actionable information to optimize your fleet fueling. Being a cloud-based solution, FuelServe.net allows you grow your fuel management as dictated by business needs. Manage a handful of sites and vehicles at first, and grow with the same platform to hundreds of sites and thousands of vehicles.

Powerful. Flexible. Scalable.

That's FuelServe.net



"FuelForce delivers a quality product that we can always count on and has consistently been there in order for us to deliver our important business fueling requirements."

— Todd Richardson
Director, Fleet Management at
City & County of Denver

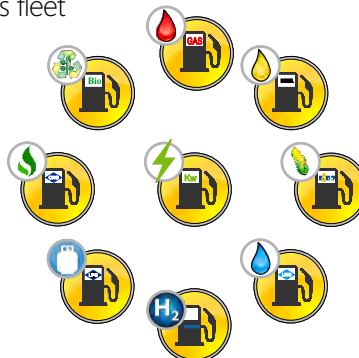
"We have had FuelForce in place for the last two years. It has been one of the best decisions we have made at our company. We now have control over our fuel. We can keep better track of where our fuel is, we can calculate our trucks' MPG better, and we have put a stop to lost fuel."

— Cris Nichols
Controller at
James A. Fulton & Sons

FuelServe.net Features

Single Dashboard to Manage All Aspects of Fleet Fueling

The FuelServe.net fuel management platform allows fleet managers to access fuel management tasks of all types from a single dashboard. FuelServe users can manage gasoline and diesel as well as bio-fuels, CNG, LNG, hydrogen, lubricants, and even electricity (for EV charging). FuelServe.net's integrated reporting provides fuel and power use by site, department, vehicles, and drivers.



Additionally, user authorization profiles enables management to give users access to specific information relative to their department or job. For example, corporate management could have access to view every department's fuel usage while branch managers may only have access to their branch location fueling.

"Switching to FuelForce fuel management was one of the best things that could have ever happened to us."

— Bruce Bringham
Supervisor Vehicle
Maintenance
Mesa Public Schools

FuelForce® Database & Reports

FuelForce® allows users to look at their data with the ability of running daily, weekly, monthly, and yearly reports as well as custom time-frames.

The software has the following features:

- Tailorable database to client-specific needs.
- Customizable reports that can be modified by all relevant fields, and set up for automatic report generation.
- Centralized control of site, driver and vehicle messaging that appears on the fuel controllers.
- Integration with Tank Level Monitoring systems for fuel storage reporting.
- Automatically receive weekly or monthly reports that allow for flexible billing, fuel usage summaries, or detailed reports.
- 50,000 vehicle & driver capacity, with a simple process to add more.
- Downloadable results provided in a simple spreadsheet format for analysis using common reporting tools.

"We have worked closely with FuelForce in order to develop an invoicing system that provides a turn-key operation for us. Forging a solid relationship was easily attainable right from the beginning and we are confident our relationship will continue to grow stronger in the future. FuelForce has been a company that has been extremely responsive in servicing our particular fueling requirements."

FuelServe.net Benefits

FuelServe.net gives fleet management staff the ability to meet the constant challenges of fuel management from an intuitive interface. The key benefits are:

Accuracy. Automating the logging of fueling transactions ensures that you know where and when fuel was dispensed and by whom and into which vehicle.

Shrinkage Reduction. Multiple levels of secure authorization are available, helping ensure there is no theft, misuse, or misallocation of fuel.

Proper Fueling. Down-to-the-hose control ties vehicle IDs to the proper fuel.

Departmental Cost Allocation. Vehicles can be assigned to departments permanently or on loan, tying fuel consumption and costs to particular departments or groups.

Anytime, Anywhere Access. It's in the cloud so you can securely access your data when and where you need to.

--Valerie Mellon
Director of Public Works
City of Menominee, Michigan

FuelServe.net: Cloud-Based Fuel Management

The Benefits of Software as a Service (SaaS)

With FuelServe.net, you can manage your fuel in the cloud. Provided on a Software as a Service model, you no longer need to load and maintain software onto your computer or server. With an internet connection and a device with a standard web browser you can securely access your account anywhere, at anytime. Manage your fuel while in the field, at the office, or even from home. In case of an emergency, fuel may be securely authorized to new users at a click of a button.

With FuelServe.net, you get the following benefits:

SaaS Benefits

- **Secure:** FuelForce uses Industry Leading Standards in security.
- **Distributed:** Your data is stored on multiple redundant data storage machines.
- **Available:** 24/7/365 availability.

IT Support

- No need for a Database, Network, and Server Administrator to provide system administration, maintenance, update and upgrade management, and back-up.
- No additional purchasing of hardware and Microsoft (server) licenses.
- No required ongoing hardware and software support costs.

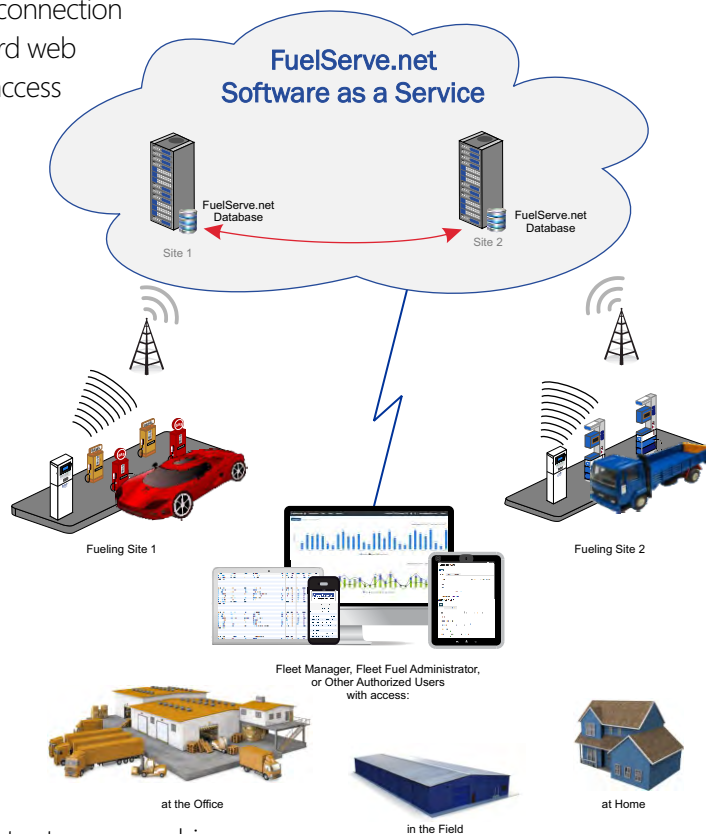
SaaS Additional Benefits

- New features are automatically rolled out as they are developed.
- Training is performed online through a teleconference rather than on-site visits.
- Help desk support included with the service price from Multiforce Systems.

Data Integration and Export

- Data may be downloaded to commonly-used spreadsheets for more analysis.
- Customized batch exports from the system can be done on a scheduled basis, streamlining the integration with accounting and other fleet software systems.
- An API is available for additional integration with other software systems.

NOTE: The FuelForce® Management Platform is also available as a locally-hosted application for clients who cannot or for other reasons prefer not to use a cloud-based system. The hosted application provides similar logging and reporting capabilities.



*"Best Product Ever!!
We have never been so
happy with a product like
this. We love the fact that we
can get up to date
information, giving us a
perfect chance to get most
accurate budgets possible.
Very user friendly."*

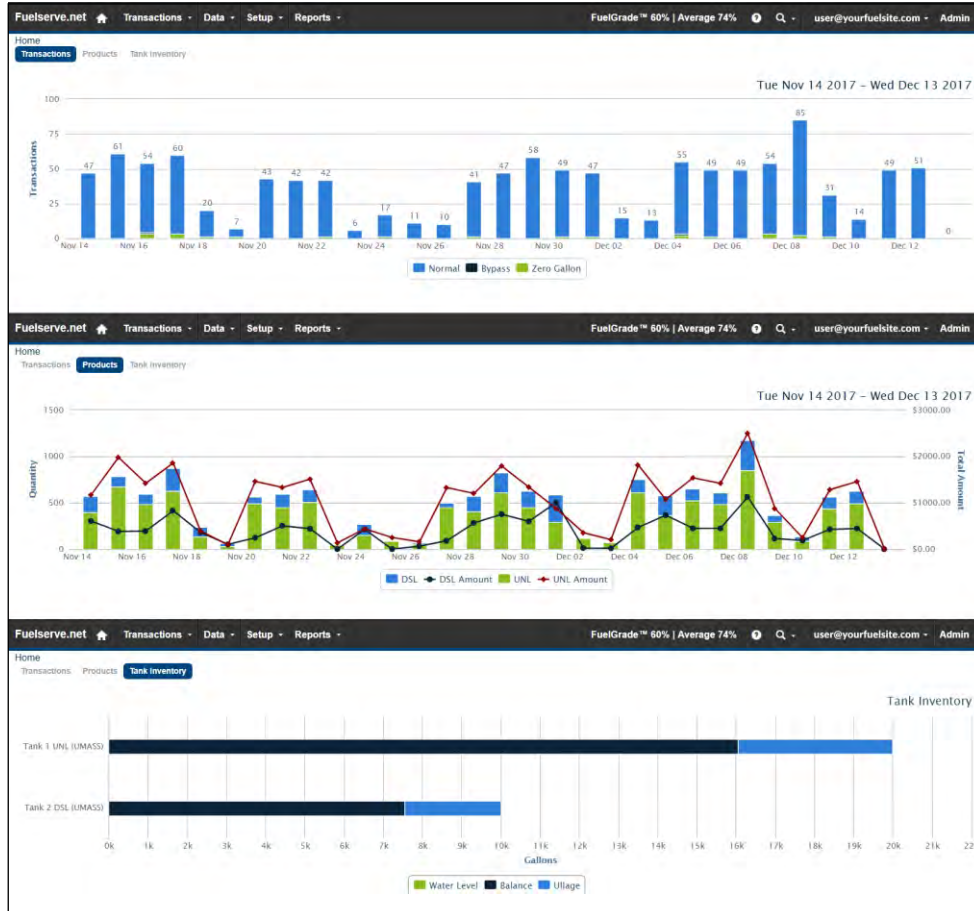
*— Mary McDermott
Shop Administrator at
Cleland Site Prep Inc.*

*"The ease of use for FuelForce
makes it a breeze to
tabulate fuel usage at our
school bus location.
I definitely recommend
it to anyone who needs to
manage fuel usage."*

*— Alberto Silva
Transportation
Coordinator at
Willingboro Schools in
New Jersey*

FuelServe.net Sample Screenshots

Main Dashboard



"Very Pleased! Very easy to pull necessary data, especially for tax returns on our diesel fuel! Helped us tremendously for a particular lawsuit by the amazing tracking details this program provides. It is very useful for many different purposes!"

— Jessica Seney
Accounting at
South State, Inc.

Fueling Transactions Report

The screenshot shows the 'Fuelissues' report with 1,165 results found. The report includes a search filter for 'Occurred is between 30 days ago and now' and a table of results.

Occurred	Department	Vehicle	Vehicle desc	Meter	Driver	Product	Quantity	Controller	Hose	Sequence	Last audit
2017-11-13 01:13:20	UMPD	M1028	2013 Ford Taurus	41795	639963	UNL	4.45000	001	3	106886	None
2017-11-13 06:00:04	PP BLDG MAINT	M1186	2017 FORD TRANSIT CONNECT XL	3876	995083	UNL	11.75000	001	3	106887	None
2017-11-13 06:40:46	AUX_SVCS	M1046	2015 Chevrolet Silverado	11351	365196	UNL	10.05000	001	4	106888	None
2017-11-13 07:26:23	ECO	M955	2012 Toyota Prius	93606	095544	UNL	5.00000	001	3	106889	None
2017-11-13 07:34:32	PP_GROUNDS	M1008	2014 KUBOTA L6060	0	193037	DSL	10.80000	001	2	106890	None
2017-11-13 07:37:20	PP BLDG MAINT	M1190	2017 FORD TRANSIT CONNECT 250 LOW ROOF	3651	280061	UNL	0.10000	001	4	106891	None
2017-11-13 07:37:49	PP BLDG MAINT	M1190	2017 FORD TRANSIT CONNECT 250 LOW ROOF	3651	280061	UNL	0.00000	001	4	106892	None
2017-11-13 07:40:56	PP BLDG MAINT	M1190	2017 FORD TRANSIT CONNECT 250 LOW ROOF	3651	280061	UNL	22.40000	001	3	106893	None
2017-11-13 07:48:19	ARCHAEOL	M897	2009 FORD ECOWAG VAN SILVER	65642	622478	UNL	26.65000	001	3	106894	None
2017-11-13 07:49:56	PP_GROUNDS	M1068	2015 KUBOTA RTV X	8155	285131	DSL	5.00000	001	1	106895	None
2017-11-13 07:59:49	RES_LIFE	M682	2006 FORD F450 DU	47736	497672	UNL	26.65000	001	3	106896	None
2017-11-13 08:01:28	RES_LIFE	M639	2004 FORD DUMP TR	42839	035542	UNL	29.90000	001	4	106897	None
2017-11-13 08:32:39	RES_LIFE	M973	2012 Ford Transit Connect	11499	361476	UNL	0.10000	001	4	106898	None
2017-11-13 08:34:42	RES_LIFE	M973	2012 Ford Transit Connect	11499	361476	UNL	9.50000	001	3	106899	None

FuelServe.net Sample Screenshots

Other Key Report Samples

The screenshots show the following data:

Vehicles

1,063 results found

Deliveries

204 results found

Mpg Report

344 results found

Vehicle	Department	Start time	End time	Min meter	Max meter	Total quantity	Mpg	Mpd	Average price	Product
1070	TRANSIT_FT	2017-11-09 16 04 24	2017-12-10 04 50 56	245848	245991	30 30000	4 71947	4 68356	3 42000	DSL
1109	TRANSIT_FT	2017-11-04 14 03 07	2017-12-12 23 33 09	158648	159300	129 55000	5 03280	16 98099	3 42000	DSL
1122	TRANSIT_FT	2017-11-09 22 16 06	2017-11-16 00 19 46	112353	112458	20 15000	5 21091	17 25305	3 42000	DSL
205Y	TRANSIT_FT	2017-11-11 00 07 33	2017-12-10 07 03 18	77943	79940	102 25000	19 53056	68 18325	3 42000	DSL
205Z	TRANSIT_FT	2017-11-12 03 06 29	2017-12-09 03 12 54	77386	78346	53 75000	17 86046	35 54968	3 42000	DSL
3040	TRANSIT_FT	2017-11-09 23 33 37	2017-12-09 04 14 51	359258	359411	50 75000	3 01477	5 24056	3 42000	DSL
ATHLE GAS1	ATHLETIC	2017-11-08 16 19 40	2017-12-04 15 38 29	99999	99999	15 00000	0 00000	0 00000	3 42000	DSL
ATHLE GAS1	ATHLETIC	2017-12-04 15 39 29	2017-12-04 15 39 50	99999	99999	1 75000	0 00000	0 00000	2 94930	UNL
CAR1	TRANSIT_OPS	2017-11-11 00 54 13	2017-12-12 18 11 52	79632	77918	52 85000	24 42545	40 54149	2 94930	UNL
CAR2	TRANSIT_OPS	2017-11-12 02 42 46	2017-12-11 19 43 24	26684	27484	41 25000	19 87878	27 60127	2 94930	UNL
CAR3	TRANSIT_OPS	2017-11-08 00 44 16	2017-12-07 15 58 41	24144	24681	24 15000	22 23602	18 12003	2 94930	UNL

"Our drivers tell us that this is the easiest system they have ever used. Here in the office, the system provided utmost accuracy and ease of use for billing and tracking purposes. Great system and great value for the money!"

"Add" Screens

The 'Add vehicle' form includes fields for: Vehicle, Description, Privilege mask (00000000), Department, Controller group, Product, Capacity (20), Discount tier, Meter, Units, Min delta (0), and Max delta.

The 'Add driver' form includes fields for: Driver, First, Last, Department, Privilege mask (00000000), Pin, Discount tier, and Mobile number. It also has checkboxes for 'Active' and 'Enable keypad'.

— Jenna Miles
Delivery Coordinator at
MW Sewall

James E. Fulton & Sons

Why Do You Need a Fuel Management System?

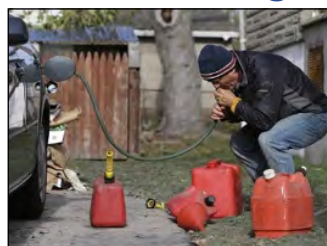
Fleet managers are constantly challenged with numerous aspects of running a fleet. One of the most costly of these is fuel, and those fleets doing manual fuel management face the following critical issues:

Inaccurate Reporting

Accurate record keeping requires your drivers' focus and motivation to log fuel usage properly. Even when done consistently, manually tracking all that detail is bound to lead to mistakes and inaccuracies, such as recording errors and misreading of hand-written records. All this leads to unreliable reporting.



Fuel Loss (Shrinkage)



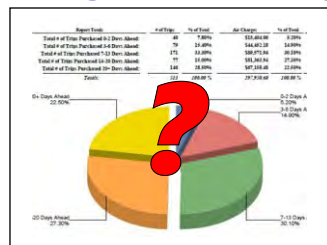
Fuel theft is becoming more and more a threat, targeting fleets+. For the average fueling operation, fuel theft can account for as much as 10% of an operations fueling budget. Uncontrolled, it can be much higher. And fuel is one of the largest segments of a fleet's budget.

Fueling Errors

As more combinations of alternative fuels are added to the "mix," the higher the probability of the wrong fuel being dispensed into vehicles. It's estimated that at least 150,000 drivers put the wrong fuel in their car each year (one every three and a half minutes). Severe engine damage is the likely result.



Tracking Fuel Costs by Department or Project



Even if manual records could be accurately kept, the process of then tracking fuel costs by department, group, or project can become an accounting nightmare. Cost-savings initiatives by department become extremely difficult to assess in a timely manner, and many eventually fail.

Access to Information

Having data folders filled with dozens of fuel log spreadsheets doesn't give you the *information* you need to manage your fleet's fueling needs. Fleet managers in today's world need access to relevant and usable information when and where it's needed to truly get their jobs done.



"Our Fuel Force system has been very easy to adapt to. It is extremely user friendly. All of our drivers have found it to be a quick learning curve. The online web host is very easy to set up as well. I can set up a new truck in less than five minutes, including job set up. If I ever have any questions, our Fuel Force representative is always there to help me through any difficulty. He is courteous and very responsive. Fuel Force has been a quality product of our operations. I am very glad that we chose them as our fuel partner."

—Cris Nichols
Controller at
James E. Fulton & Sons

"Call support is great. Call back from customer service is timely and they always answer my questions. The ability to create specialty reports is a great feature."

—Brian Barwick
Controller at
Jess Howard Electric
Co.

World-Class Customer Support

When you purchase a FuelForce® system, you are not only purchasing the premier fleet fuel management system available, you also have the support of a professional staff that is able to answer every question you may have.

To Contact Multiforce Customer Support:

Email: customersupport@fuelforce.com

Phone: (800) 257-9512

Hours: Monday - Friday

8:00 am to 8:00 pm EST

24 / 7 Support Plans Available



To learn more or to setup a demo contact us:
Multiforce Systems Corporation
Phone: **609.683.4242**
Email: sales@fuelforce.com



101 Wall St, Princeton, NJ 08540
www.fuelforce.com

